



# 1. Technical Data

## Mechanical

Dimensions	160 x 91 x 60 mm
Weight	316 g
Enclosure Material	ABS

## Environmental

Ambient Temperature Range	0 - 50 °C
Permissible Relative Humidity	≤ 80 %, non-condensing
Ingress Protection	IP20

## Electrical

Nominal Supply Voltage	12 V
Operating Voltage Range	9 - 30 V
Current Consumption avg. (12 V)	265 mA with TS Point Cloud Processing running
Power Consumption	<5W with TS Point Cloud Processing running

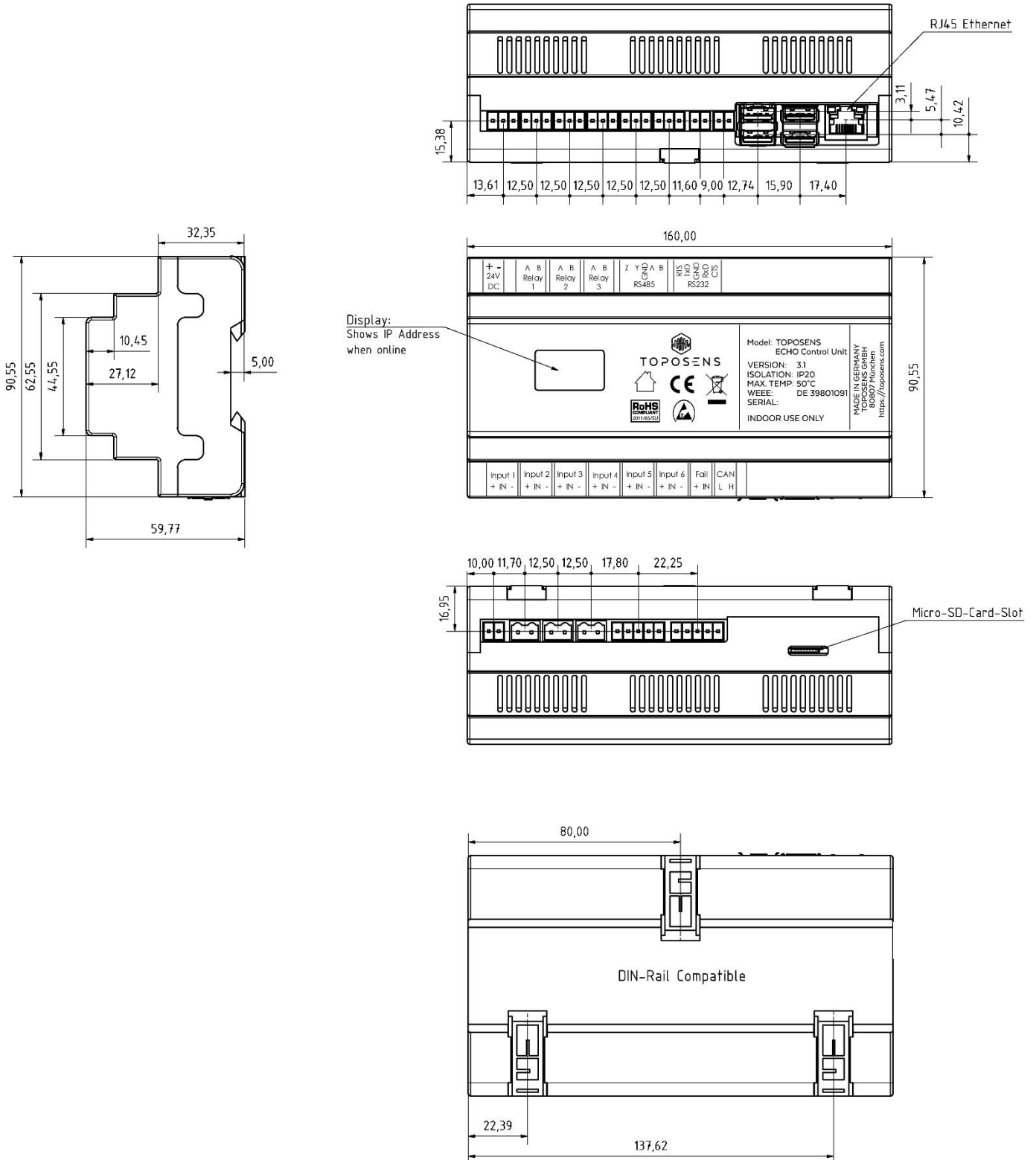
## Connectivity

Ethernet	1 x 10/100/1000 Mbps, RJ45 connector
CAN Bus	1x CANBUS, 1 Mbps (in use for Sensor)
RS485/422 (do not connect)	1x RS485 (e.g. for Modbus RTU)
RS232 (do not connect)	1x RS232 (not isolated)
Digital Inputs (24 V)	6x dry contact or active mode, isolated
Relay Outputs	3x NO contacts, 240V, 3 A max., not fused
HDMI (do not connect)	1x Full size HDMI port (base version)
USB (do not connect)	4x USB A 2.0 ports (base version)

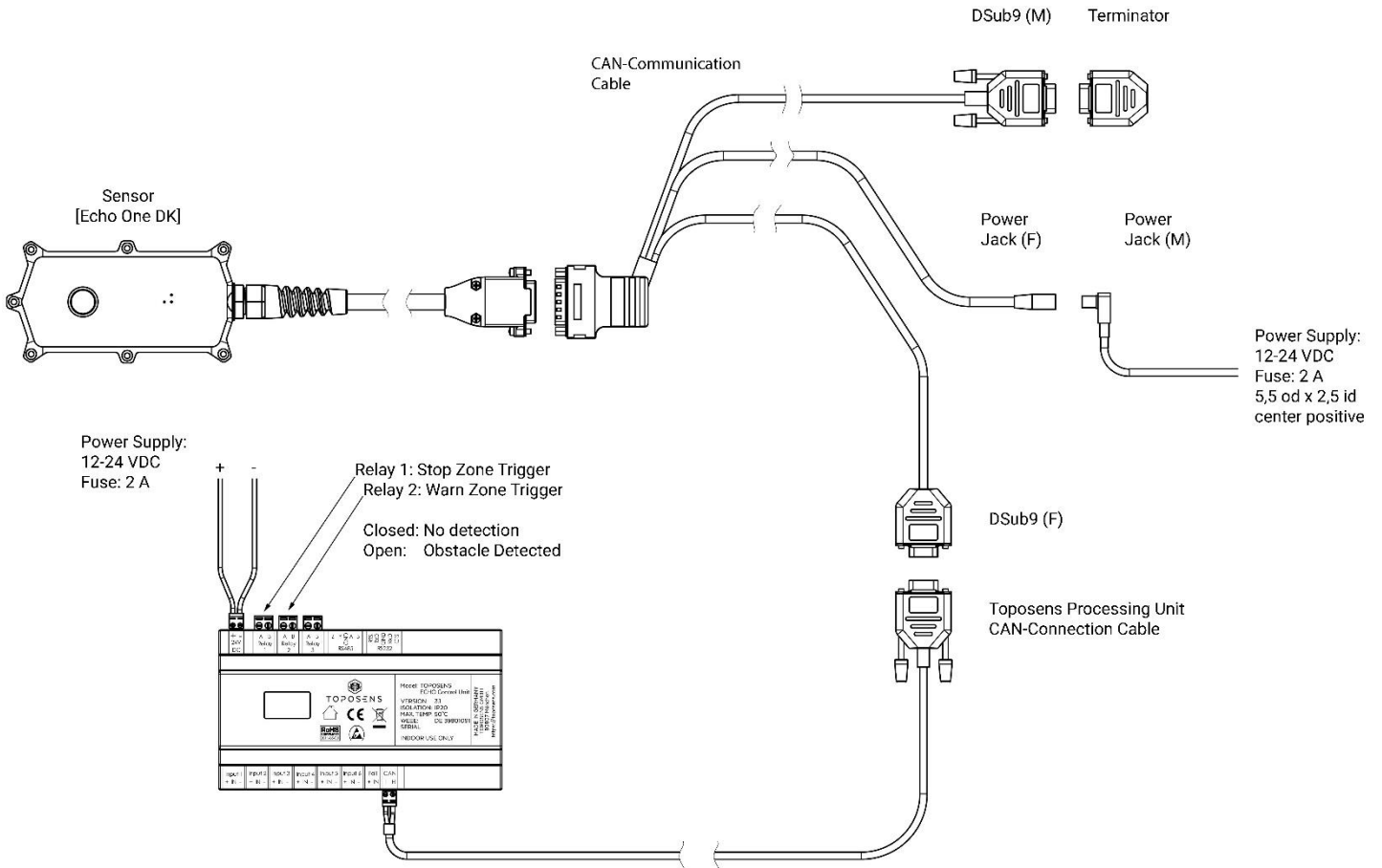
## Compliance

EMC	<ul style="list-style-type: none"> <li>- DIN EN 55022: 2011 according to VDE 0875 part 22 of 12.2011</li> <li>- DIN EN 61000-4-2: 2009 according to VDE 0847 part 4-2 of 12.2009</li> <li>- DIN EN 61000-4-3: 2006+A1:2008+ A2: 2010 according to VDE 0847 part 4-3 of 04.2011</li> <li>- DIN EN 61000-4-4: 2012 according to VDE 0847 part 4-4 of 04.2013</li> <li>- DIN EN 61000-4-5: 1995 +A1: 2014 according to VDE 0847 part 4-5 of 03.2015</li> <li>- DIN EN 61000-4-6: 2014 according to VDE 0847 part 4-6 of 08.2014</li> <li>- DIN EN 61000-4-8: 2010 according to VDE 0847 part 4-8 of 11.2010</li> </ul>
Norms, Standards and Certifications	CE; RoHS

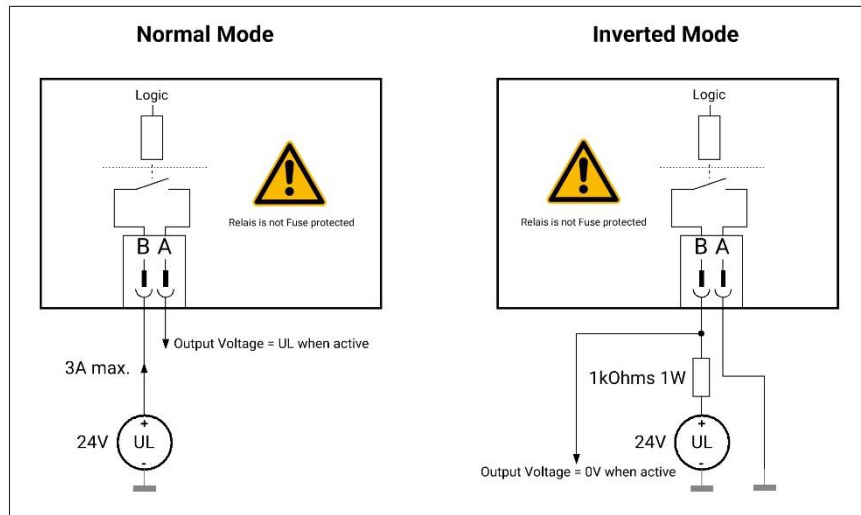
## 2. Drawings and Relevant Connections



### 3. Installation Schematics



## 4. Relay Output Diagram



# Toposens GmbH

---

Lyonel-Feininger-Straße 28  
80807 Munich  
[www.toposens.com](http://www.toposens.com)

+49 (0) 89 23751540

Document Version: 1.3  
Release Date: April 2022